



ETF Category Report

Equity: Thematic - Natural Resources

As of 2/29/2024

The ETF Action Category Reports present category averages, category breakdown, and ETF level data using the ETF Action Classification System. For more information, please reach out to team@etfaction.com. Category reports include data relating to:

Flows & Product Growth

Structure

Performance

Risk

Composition

Fundamentals

This report is currently in beta so if you have any questions or see any issues, please send a message to team@etfaction.com.

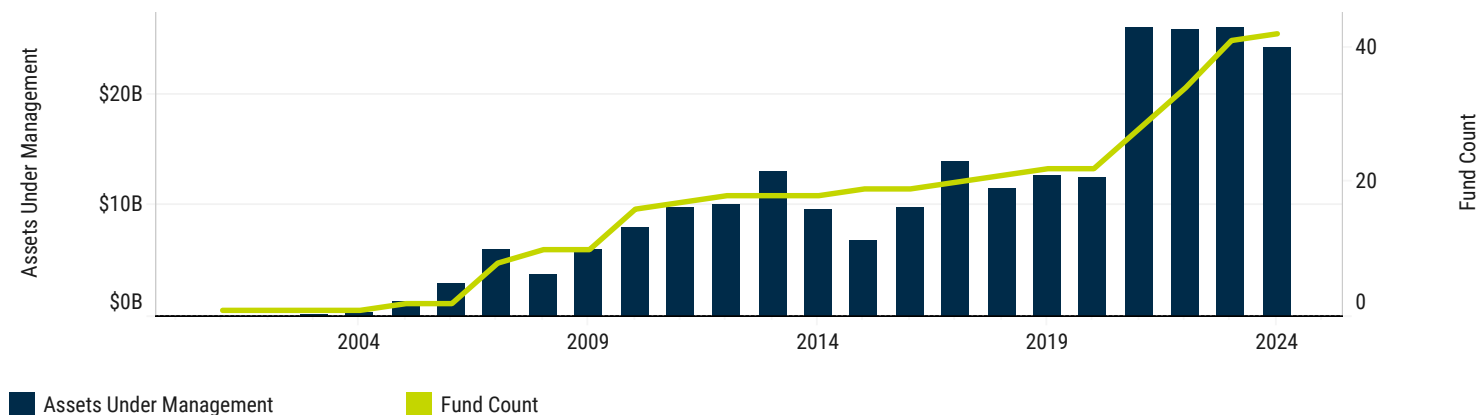
Copyright ©2023 ETF Action, Inc. All Rights Reserved. Information or data shown or used in this material was received from sources believed to be reliable, but accuracy is not guaranteed. Simulated performance results have inherent limitations. The results for model portfolio and blended model portfolio illustration(s) are based on actual returns of the investment strategies and securities in the portfolio and are provided for illustrative purposes only. Model portfolio data and performance is based upon the aggregation of the underlying investments according to the given allocation and calculated using FactSet's data with ETF Action's software and methodologies. The services are not intended and should not be construed as financial or investment advice, a recommendation or promotion. Neither ETF Action nor its licensors shall be responsible for investment decisions, damages, or other losses *resulting from use of the services*. *Past performance* does not guarantee future performance. Any information contained in the services should not be acted upon without obtaining specific legal, tax, and investment advice from a licensed professional. **For Financial Professional Use Only.**

Category: Equity: Thematic - Natural Resources

As of 2/29/2024

Fund Count	Assets Under Management	1 Month Flows	3 Month Flows	Year To Date Flows	1 Year Flows	3 Year Flows	5 Year Flows
40	\$24.2B	(\$0.44B)	(\$0.92B)	(\$0.58B)	(\$1.26B)	\$8.43B	\$9.59B

Category Growth



Top 10 Funds by 1 Month Flows

Ticker	Name	Inception	AUM	1 Month	3 Month	Year To Date	1 Year	3 Year	5 Year
URA	Global X Uranium ETF	11/4/2010	\$2,715.26M	\$149.0M	\$400.7M	\$301.6M	\$719.0M	\$2,010.8M	\$2,116.2M
URNJ	Sprott Junior Uranium Miners ETF	2/1/2023	\$317.24M	\$66.7M	\$145.0M	\$119.2M	\$283.8M	\$298.5M	\$298.5M
MGNR	American Beacon GLG Natural Resources ETF	2/6/2024	\$28.29M	\$26.2M	\$26.2M	\$26.2M	\$26.2M	\$26.2M	\$26.2M
NLR	VanEck Uranium+Nuclear Energy ETF	8/13/2007	\$160.01M	\$15.2M	\$29.8M	\$24.3M	\$78.7M	\$113.8M	\$106.2M
HYDR	Global X Hydrogen ETF	7/12/2021	\$35.93M	\$4.0M	\$7.0M	\$6.3M	\$25.5M	\$93.1M	\$93.1M
LITP	Sprott Lithium Miners ETF	2/1/2023	\$5.94M	\$1.5M	\$2.2M	\$2.1M	\$5.4M	\$8.1M	\$8.1M
FTWO	Strive FAANG 2.0 ETF	8/31/2023	\$5.07M	\$0.7M	\$2.0M	\$2.0M	\$4.9M	\$4.9M	\$4.9M
EV	Mast Global Battery Recycling & Production ETF	12/21/2023	\$6.34M	\$0.7M	\$6.9M	\$3.6M	\$6.9M	\$6.9M	\$6.9M
NUKZ	Range Nuclear Renaissance Index ETF	1/24/2024	\$0.83M	\$0.5M	\$0.8M	\$0.8M	\$0.8M	\$0.8M	\$0.8M
FIW	First Trust Water ETF	5/8/2007	\$1,567.07M	\$0.1M	(\$4.1M)	\$0.1M	\$37.1M	\$521.7M	\$750.0M

Bottom 10 Funds by 1 Month Flows

Ticker	Name	Inception	AUM	1 Month	3 Month	Year To Date	1 Year	3 Year	5 Year
GNR	SPDR S&P Global Natural Resources ETF	9/13/2010	\$3,378.25M	(\$329.8M)	(\$283.4M)	(\$370.2M)	(\$109.5M)	\$1,664.5M	\$2,034.8M
GUNR	FlexShares Morningstar Global Upstream Natura..	9/16/2011	\$6,224.55M	(\$134.5M)	(\$677.1M)	(\$337.6M)	(\$447.1M)	\$1,829.4M	\$571.8M
LIT	Global X Lithium & Battery Tech ETF	7/22/2010	\$1,675.75M	(\$55.5M)	(\$288.0M)	(\$124.8M)	(\$827.9M)	(\$32.3M)	\$1,590.6M
IGE	iShares North American Natural Resources ETF	10/22/2001	\$508.91M	(\$38.2M)	(\$66.1M)	(\$66.0M)	(\$323.1M)	(\$45.3M)	(\$360.1M)
URNM	Sprott Uranium Miners ETF	12/3/2019	\$1,688.96M	(\$29.3M)	\$60.7M	(\$12.3M)	\$349.8M	\$1,245.8M	\$1,339.7M
FTRI	First Trust Indxx Global Natural Resources Inco..	3/11/2010	\$190.26M	(\$18.7M)	(\$26.4M)	(\$20.5M)	(\$94.6M)	\$232.5M	\$238.5M
VEGI	iShares MSCI Agriculture Producers ETF	1/31/2012	\$130.24M	(\$18.2M)	(\$36.9M)	(\$27.6M)	(\$114.9M)	\$125.6M	\$143.4M
CGW	Invesco S&P Global Water Index ETF	5/14/2007	\$955.01M	(\$16.9M)	(\$13.2M)	(\$5.0M)	(\$88.1M)	\$31.2M	\$74.4M
REMX	VanEck Rare Earth/Strategic Metals ETF	10/27/2010	\$343.64M	(\$14.4M)	\$7.3M	\$10.2M	(\$54.1M)	(\$83.1M)	\$301.5M
WOOD	iShares Global Timber & Forestry ETF	6/24/2008	\$190.21M	(\$13.8M)	(\$18.5M)	(\$18.5M)	(\$36.2M)	(\$110.2M)	(\$143.8M)

Copyright ©2023 ETF Action, Inc. All Rights Reserved. Information or data shown or used in this material was received from sources believed to be reliable, but accuracy is not guaranteed. Simulated performance results have inherent limitations. The results for model portfolio and blended model portfolio illustration(s) are based on actual returns of the investment strategies and securities in the portfolio and are provided for illustrative purposes only. Model portfolio data and performance is based upon the aggregation of the underlying investments according to the given allocation and calculated using FactSet's data with ETF Action's software and methodologies. The services are not intended and should not be construed as financial or investment advice, a recommendation or promotion. Neither ETF Action nor its licensors shall be responsible for investment decisions, damages, or other losses resulting from use of the services. Past performance does not guarantee future performance. Any information contained in the services should not be acted upon without obtaining specific legal, tax, and investment advice from a licensed professional. **For Financial Professional Use Only.**

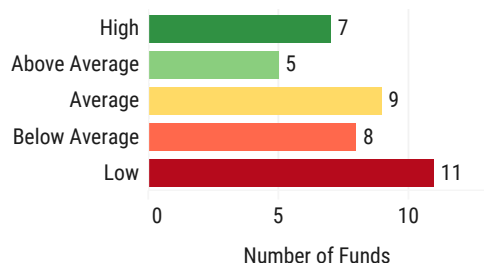
Category: Equity: Thematic - Natural Resources

As of 2/29/2024

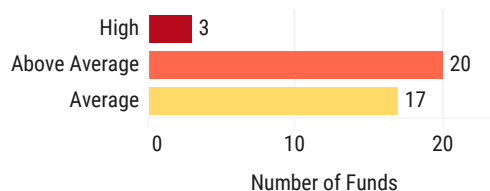
Fund Count	Assets Under Management	Average Expense Ratio	Average Lifespan	Average TTM Yield	Average Spread (%)	Average ADV (\$)
40	\$24.2B	0.57%	8.29 Years	2.18%	0.36%	\$6.19M

Breakdown of Category Universe Ratings

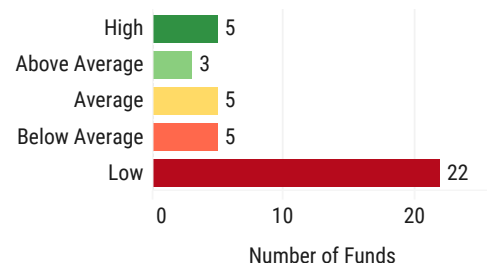
Assets Under Management



Expense Ratio



Liquidity



Top 10 Funds by Greatest Assets Under Management

Ticker	Name	Inception	AUM	Expense Ratio	Distribution Yield (TTM)	Average Spread	ADV
GUNR	FlexShares Morningstar Global Upstream Natural Resourc..	9/16/2011	\$6,224.55M	0.46%	3.78%	0.03%	\$29.97M
GNR	SPDR S&P Global Natural Resources ETF	9/13/2010	\$3,378.25M	0.40%	3.58%	0.06%	\$23.25M
URA	Global X Uranium ETF	11/4/2010	\$2,715.26M	0.69%	6.15%	0.04%	\$86.20M
PHO	Invesco Water Resources ETF	12/6/2005	\$2,038.27M	0.59%	0.57%	0.08%	\$4.64M
URNM	Sprott Uranium Miners ETF	12/3/2019	\$1,688.96M	0.83%	3.64%	0.20%	\$42.54M
LIT	Global X Lithium & Battery Tech ETF	7/22/2010	\$1,675.75M	0.75%	1.30%	0.11%	\$27.46M
FIW	First Trust Water ETF	5/8/2007	\$1,567.07M	0.53%	0.67%	0.09%	\$4.04M
CGW	Invesco S&P Global Water Index ETF	5/14/2007	\$955.01M	0.57%	1.55%	0.09%	\$2.89M
MOO	VanEck Agribusiness ETF	8/31/2007	\$819.52M	0.53%	3.08%	0.11%	\$5.09M
IGE	iShares North American Natural Resources ETF	10/22/2001	\$508.91M	0.41%	2.85%	0.03%	\$3.94M

Top 10 Funds by Lowest Expense Ratio

Ticker	Name	Inception	AUM	Expense Ratio	Distribution Yield (TTM)	Average Spread	ADV
HDRO	Defiance Next Gen H2 ETF	3/9/2021	\$20.82M	0.30%	0.26%	0.48%	\$0.18M
NANR	SPDR S&P North American Natural Resources ETF	12/15/2015	\$478.85M	0.35%	2.92%	0.09%	\$1.71M
VEGI	iShares MSCI Agriculture Producers ETF	1/31/2012	\$130.24M	0.39%	2.68%	0.22%	\$1.21M
EBLU	Ecofin Global Water ESG Fund	2/15/2017	\$51.79M	0.40%	1.43%	0.50%	\$0.14M
GNR	SPDR S&P Global Natural Resources ETF	9/13/2010	\$3,378.25M	0.40%	3.58%	0.06%	\$23.25M
IGE	iShares North American Natural Resources ETF	10/22/2001	\$508.91M	0.41%	2.85%	0.03%	\$3.94M
WOOD	iShares Global Timber & Forestry ETF	6/24/2008	\$190.21M	0.42%	1.74%	0.30%	\$0.67M
HJEN	Direxion Hydrogen ETF	3/25/2021	\$25.41M	0.45%	0.22%	0.97%	\$0.16M
WBAT	WisdomTree Battery Value Chain and Innovation Fund	2/17/2022	\$4.15M	0.45%	2.67%	0.30%	\$0.03M
GUNR	FlexShares Morningstar Global Upstream Natural Resourc..	9/16/2011	\$6,224.55M	0.46%	3.78%	0.03%	\$29.97M

Copyright ©2023 ETF Action, Inc. All Rights Reserved. Information or data shown or used in this material was received from sources believed to be reliable, but accuracy is not guaranteed. Simulated performance results have inherent limitations. The results for model portfolio and blended model portfolio illustration(s) are based on actual returns of the investment strategies and securities in the portfolio and are provided for illustrative purposes only. Model portfolio data and performance is based upon the aggregation of the underlying investments according to the given allocation and calculated using FactSet's data with ETF Action's software and methodologies. The services are not intended and should not be construed as financial or investment advice, a recommendation or promotion. Neither ETF Action nor its licensors shall be responsible for investment decisions, damages, or other losses resulting from use of the services. Past performance does not guarantee future performance. Any information contained in the services should not be acted upon without obtaining specific legal, tax, and investment advice from a licensed professional. **For Financial Professional Use Only.**

Category Performance



Category: Equity: Thematic - Natural Resources

As of 2/29/2024

Fund Count	Average 1 Month Return	Average 3 Month Return	Average YTD Return	Average 1 Year Return	Average 3 Year Return**	Average 5 Year Return**	Average 10 Year Return**
40	0.43%	1.04%	-5.14%	-2.88%	2.86%	4.36%	1.83%

**Annualized

Breakdown of Category Performance

1 Month Returns



Advancers*
23
Top 1 Month Return
7.66%

Decliners*
18
Bottom 1 Month Return
-10.56%

Top 10 Performers: 1 Month

Ticker	Name	Inception	AUM	1 Month	3 Month	YTD	1 Year	3 Year*	5 Year*
NUKZ	Range Nuclear Renaissance Index ETF	1/24/2024	\$0.83M	7.66%					
ILIT	iShares Lithium Miners and Producers ETF	6/23/2023	\$2.77M	7.57%	-6.21%	-15.19%			
LITP	Sprott Lithium Miners ETF	2/1/2023	\$5.94M	7.02%	-5.38%	-16.52%	-38.74%		
PHO	Invesco Water Resources ETF	12/6/2005	\$2,038.27M	6.36%	14.39%	5.01%	21.37%	10.37%	14.32%
LIT	Global X Lithium & Battery Tech ETF	7/22/2010	\$1,675.75M	6.30%	-3.32%	-9.58%	-27.03%	-8.13%	10.04%
PIO	Invesco Global Water ETF	6/13/2007	\$286.62M	5.96%	13.38%	3.95%	20.49%	7.14%	10.50%
AQWA	Global X Clean Water ETF	4/8/2021	\$9.40M	5.40%	10.26%	2.72%	17.93%		
FIW	First Trust Water ETF	5/8/2007	\$1,567.07M	4.84%	12.60%	3.31%	18.50%	9.62%	14.63%
EBLU	Ecofin Global Water ESG Fund	2/15/2017	\$51.79M	4.54%	10.08%	2.46%	16.32%	5.60%	10.97%
REMX	VanEck Rare Earth/Strategic Metals ETF	10/27/2010	\$343.64M	4.33%	-8.07%	-14.64%	-38.09%	-12.18%	3.85%

Bottom 10 Performers: 1 Month

Ticker	Name	Inception	AUM	1 Month	3 Month	YTD	1 Year	3 Year*	5 Year*
URNJ	Sprott Junior Uranium Miners ETF	2/1/2023	\$317.24M	-10.56%	7.25%	3.09%	45.13%		
URNM	Sprott Uranium Miners ETF	12/3/2019	\$1,688.96M	-9.99%	6.16%	-0.17%	48.76%	25.72%	
HYDR	Global X Hydrogen ETF	7/12/2021	\$35.93M	-8.83%	-16.36%	-20.84%	-54.87%		
URA	Global X Uranium ETF	11/4/2010	\$2,715.26M	-8.56%	4.60%	-0.83%	39.23%	21.11%	21.15%
HDRO	Defiance Next Gen H2 ETF	3/9/2021	\$20.82M	-7.73%	-15.97%	-18.60%	-49.32%		
HJEN	Direxion Hydrogen ETF	3/25/2021	\$25.41M	-4.66%	-8.55%	-12.69%	-28.64%		
CRIT	Optica Rare Earths & Critical Materials ETF Optica Rare..	3/28/2022	\$1.96M	-4.27%	-1.08%	-11.64%	-16.61%		
NLR	VanEck Uranium+Nuclear Energy ETF	8/13/2007	\$160.01M	-3.06%	5.25%	1.90%	38.10%	18.63%	10.00%
GMET	VanEck Green Metals ETF	11/9/2021	\$23.60M	-2.32%	-2.65%	-11.09%	-24.69%		
SETM	Sprott Energy Transition Materials ETF	2/1/2023	\$11.24M	-1.08%	0.88%	-7.95%	-7.91%		

*Funds must have at least one month track record to be included in performance statistics.

Copyright ©2023 ETF Action, Inc. All Rights Reserved. Information or data shown or used in this material was received from sources believed to be reliable, but accuracy is not guaranteed. Simulated performance results have inherent limitations. The results for model portfolio and blended model portfolio illustration(s) are based on actual returns of the investment strategies and securities in the portfolio and are provided for illustrative purposes only. Model portfolio data and performance is based upon the aggregation of the underlying investments according to the given allocation and calculated using FactSet's data with ETF Action's software and methodologies. The services are not intended and should not be construed as financial or investment advice, a recommendation or promotion. Neither ETF Action nor its licensors shall be responsible for investment decisions, damages, or other losses resulting from use of the services. Past performance does not guarantee future performance. Any information contained in the services should not be acted upon without obtaining specific legal, tax, and investment advice fro..

3 Year Risk Metrics Vs. S&P 500 (SPY)



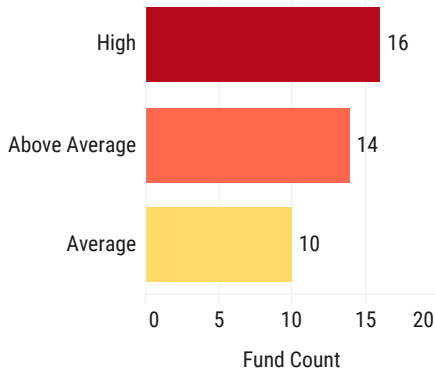
Category: Equity: Thematic - Natural Resources

As of 2/29/2024

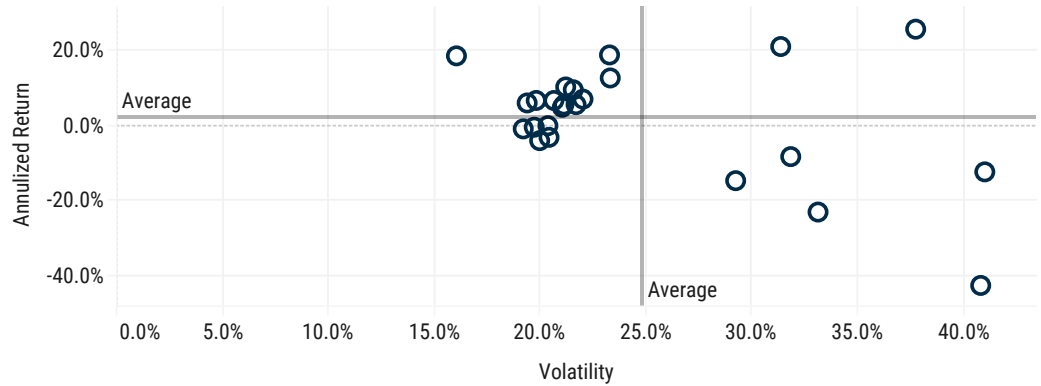
Fund Count	Average Return	Average Volatility	Average Correlation	Average Sharpe Ratio	Average Sortino Ratio	Average Beta	Average Alpha	Average Up Capture	Average Down Capture
40	2.18%	24.80%	0.70	0.12	0.22	0.95	-7.74%	71.40%	104.39%

Breakdown of Category Risk

Category Breakdown: Volatility Ratings



3 Year Risk-Return Scatterplot



Top 10 Funds by Sharpe Ratio (3 Year)

Ticker	Name	AUM	Annualized Return	Volatility	Correlation (SPY)	Sharpe Ratio	Beta	Alpha	Up Capture	Down Capture	Volatility Rating (0-5)
NLR	VanEck Uranium+Nuclear Energy ETF	\$160.0M	18.7%	16.0%	60.6%	1.08	0.55	11.5%	71.4%	28.7%	3.60
IGE	iShares North American Natural Resource..	\$508.9M	18.9%	23.2%	55.1%	0.75	0.72	10.9%	84.8%	48.1%	3.95
URA	Global X Uranium ETF	\$2,715.3M	21.2%	31.3%	46.0%	0.62	0.81	13.7%	85.4%	40.2%	5.00
URNM	Sprott Uranium Miners ETF	\$1,689.0M	25.8%	37.7%	33.2%	0.61	0.71	20.9%	75.3%	6.6%	5.00
NANR	SPDR S&P North American Natural Resour..	\$478.9M	12.8%	23.3%	53.4%	0.52	0.70	5.8%	72.9%	55.5%	3.72
PHO	Invesco Water Resources ETF	\$2,038.3M	10.4%	21.2%	92.6%	0.47	1.11	-2.0%	104.9%	113.0%	2.95
FIW	First Trust Water ETF	\$1,567.1M	9.6%	21.5%	93.6%	0.43	1.14	-3.0%	104.2%	115.1%	3.01
GUNR	FlexShares Morningstar Global Upstream ..	\$6,224.5M	6.8%	19.8%	63.3%	0.33	0.71	-0.5%	63.1%	66.6%	3.24
GNR	SPDR S&P Global Natural Resources ETF	\$3,378.3M	6.8%	20.6%	67.1%	0.32	0.78	-1.3%	69.6%	76.4%	3.40
PIO	Invesco Global Water ETF	\$286.6M	7.2%	22.0%	91.9%	0.32	1.14	-5.3%	103.4%	124.6%	3.10

Least Volatile 10 Funds by Volatility Rating

Ticker	Name	AUM	Annualized Return	Volatility	Correlation (SPY)	Sharpe Ratio	Beta	Alpha	Up Capture	Down Capture	Volatility Rating (0-5)
FTAG	First Trust Indxx Global Agriculture ETF	\$9.5M	-3.9%	19.9%	71.7%	-0.20	0.81	-12.3%	51.2%	98.3%	2.89
MOO	VanEck Agribusiness ETF	\$819.5M	-3.0%	20.4%	77.8%	-0.15	0.90	-12.4%	60.1%	107.3%	2.92
CGW	Invesco S&P Global Water Index ETF	\$955.0M	5.7%	21.7%	94.4%	0.26	1.16	-6.9%	100.6%	126.8%	2.94
PHO	Invesco Water Resources ETF	\$2,038.3M	10.4%	21.2%	92.6%	0.47	1.11	-2.0%	104.9%	113.0%	2.95
VEGI	iShares MSCI Agriculture Producers ETF	\$130.2M	-0.3%	19.7%	69.8%	-0.02	0.78	-8.3%	51.0%	80.8%	2.97
EBLU	Ecofin Global Water ESG Fund	\$51.8M	5.6%	21.1%	92.3%	0.26	1.10	-6.4%	95.0%	119.1%	2.97
FIW	First Trust Water ETF	\$1,567.1M	9.6%	21.5%	93.6%	0.43	1.14	-3.0%	104.2%	115.1%	3.01
CUT	Invesco MSCI Global Timber ETF	\$53.7M	-0.8%	19.2%	81.5%	-0.04	0.88	-10.2%	65.2%	104.2%	3.05
HAP	VanEck Natural Resources ETF	\$108.3M	6.1%	19.4%	72.6%	0.31	0.79	-2.3%	67.9%	76.7%	3.07
PIO	Invesco Global Water ETF	\$286.6M	7.2%	22.0%	91.9%	0.32	1.14	-5.3%	103.4%	124.6%	3.10

Copyright ©2023 ETF Action, Inc. All Rights Reserved. Information or data shown or used in this material was received from sources believed to be reliable, but accuracy is not guaranteed. Simulated performance results have inherent limitations. The results for model portfolio and blended model portfolio illustration(s) are based on actual returns of the investment strategies and securities in the portfolio and are provided for illustrative purposes only. Model portfolio data and performance is based upon the aggregation of the underlying investments according to the given allocation and calculated using FactSet's data with ETF Action's software and methodologies. The services are not intended and should not be construed as financial or investment advice, a recommendation or promotion. Neither ETF Action nor its licensors shall be responsible for investment decisions, damages, or other losses resulting from use of the services. Past performance does not guarantee future performance. Any information contained in the services should not be acted upon without obtaining specific legal, tax, and investment advice from a licensed professional. **For Financial Professional Use Only.**

Equity Composition



Category: Equity: Thematic - Natural Resources

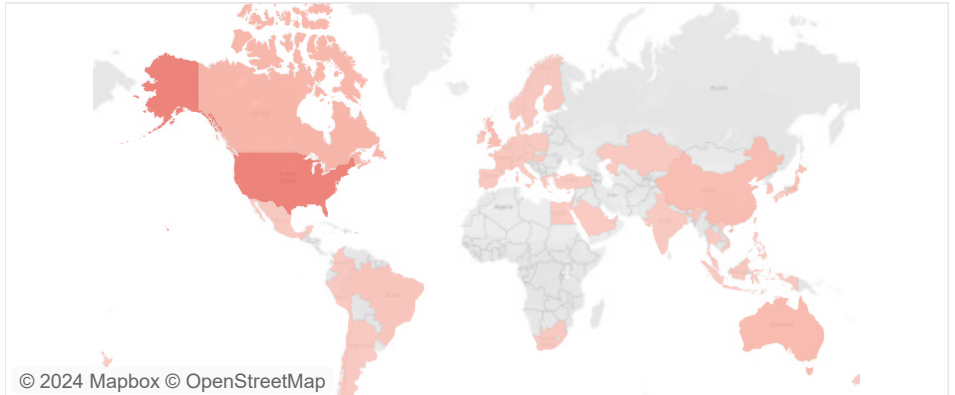
As of 2/29/2024

Fund Count*	Assets Under Management	Average Top 10 Holdings Weight	Average Weighted Avg Market Cap	Average Sector Concentration	Average Stock Concentration
39	\$24.2B	55.00%	\$36,413M	High	Above Average

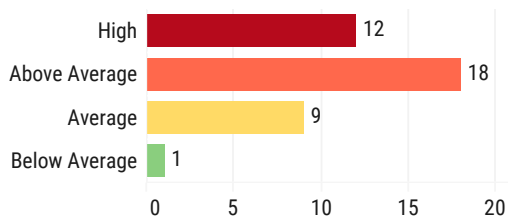
Average Size & Style Exposure

	Growth	Core	Value
Large-cap	11.38%	9.45%	13.28%
Mid-cap	16.26%	13.47%	11.18%
Small-cap	8.85%	7.55%	7.42%

Average Geographic Exposure



Category Breakdown: Stock Concentration



Average Market Development

U.S.	37.37%
Developed ex-U.S.	47.36%
Emerging	14.27%
Frontier	0.91%
Rest of World	0.03%
Unassigned	0.06%

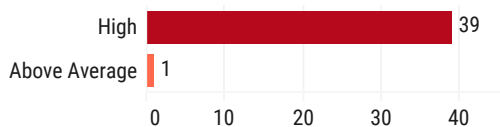
Average Regional Exposure

North America	48.99%
Europe	19.84%
Asia Pacific	25.79%
Latin America	3.93%
Africa	1.45%
Unassigned	0.00%

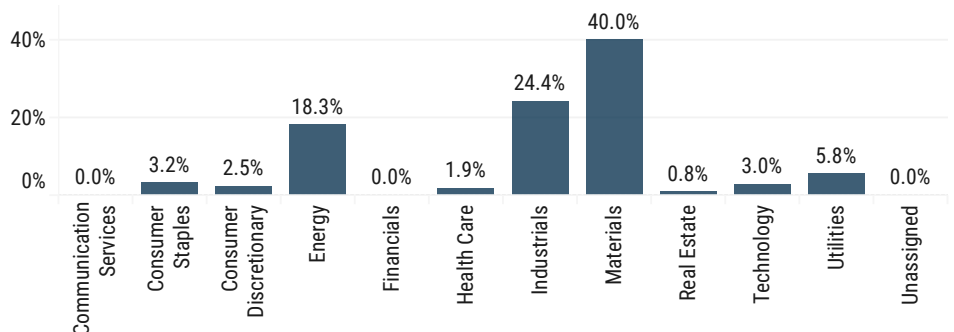
Average Top 10 Country Exposure

United States	37.37%
Canada	11.31%
Australia	8.66%
United Kingdom	7.17%
China	6.87%
Japan	4.20%
South Korea	3.15%
Brazil	2.35%
Switzerland	2.18%
France	1.69%

Category Breakdown: Sector Concentration



Average Sector Exposure



*Fund count for composition and fundamentals excludes funds with no recent holdings date (ie: ETNs)

Copyright ©2023 ETF Action, Inc. All Rights Reserved. Information or data shown or used in this material was received from sources believed to be reliable, but accuracy is not guaranteed. Simulated performance results have inherent limitations. The results for model portfolio and blended model portfolio illustration(s) are based on actual returns of the investment strategies and securities in the portfolio and are provided for illustrative purposes only. Model portfolio data and performance is based upon the aggregation of the underlying investments according to the given allocation and calculated using FactSet's data with ETF Action's software and methodologies. The services are not intended and should not be construed as financial or investment advice, a recommendation or promotion. Neither ETF Action nor its licensors shall be responsible for investment decisions, damages, or other losses resulting from use of the services. Past performance does not guarantee future performance. Any information contained in the services should not be acted upon without obtaining specific legal, tax, and investment advice from a licensed professional. **For Financial Professional Use Only.**

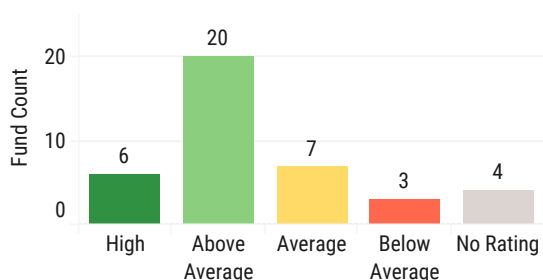
Category: Equity: Thematic - Natural Resources

As of 2/29/2024

Valuation

Fund Count*	Avg Price / Earnings (TTM)	Avg Price / Earnings (NTM)	Avg Price / Sales (TTM)	Avg Price / Sales (NTM)	Avg Price / Cash Flow (TTM)	Avg Price / Free Cash Flow (TTM)	Avg Price / Book (TTM)
39	15.46	15.97	1.60	1.85	8.39	16.71	2.05

Category Breakdown: Value Rating



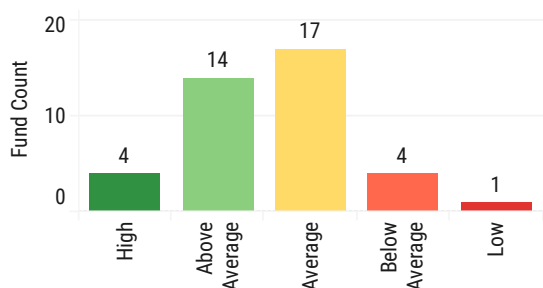
Top 10 Funds by Value Score

Ticker	Name	AUM	Value Rating (0-5)
HJEN	Direxion Hydrogen ETF	\$25.41M	4.52
FTRI	First Trust Indxx Global Natural Resources Income ETF	\$190.26M	4.41
FTAG	First Trust Indxx Global Agriculture ETF	\$9.47M	4.08
MOO	VanEck Agribusiness ETF	\$819.52M	4.07
GNR	SPDR S&P Global Natural Resources ETF	\$3,378.25M	4.05
GMET	VanEck Green Metals ETF	\$23.60M	4.05
WOOD	iShares Global Timber & Forestry ETF	\$190.21M	3.98
NDIV	Amplify Natural Resources Dividend Income ETF	\$10.71M	3.96
GUNR	FlexShares Morningstar Global Upstream Natural Resourc..	\$6,224.55M	3.87
HAP	VanEck Natural Resources ETF	\$108.26M	3.85

Quality

Fund Count*	Avg Return On Equity	Avg Return On Assets	Avg Return On Invested Capital	Avg Long Term Debt / Equity	Avg Interest Coverage
39	12.3%	6.0%	7.9%	55.1%	-0.5%

Category Breakdown: Quality Rating



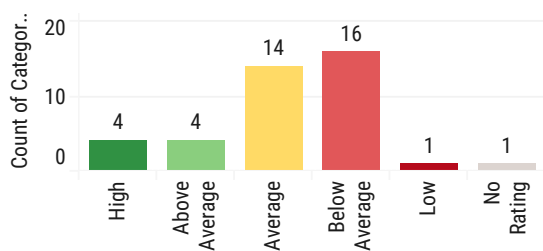
Top 10 Funds by Quality Score

Ticker	Name	AUM	Quality Rating (0-5)
ION	ProShares S&P Global Core Battery Metals ETF	\$2.11M	4.78
ILIT	iShares Lithium Miners and Producers ETF	\$2.77M	4.29
NANR	SPDR S&P North American Natural Resources ETF	\$478.85M	4.15
REMX	VanEck Rare Earth/Strategic Metals ETF	\$343.64M	4.13
GMET	VanEck Green Metals ETF	\$23.60M	3.97
LIT	Global X Lithium & Battery Tech ETF	\$1,675.75M	3.90
GNR	SPDR S&P Global Natural Resources ETF	\$3,378.25M	3.82
GUNR	FlexShares Morningstar Global Upstream Natural Resourc..	\$6,224.55M	3.79
BATT	Amplify Lithium & Battery Technology ETF	\$90.84M	3.75
FTRI	First Trust Indxx Global Natural Resources Income ETF	\$190.26M	3.73

Growth

Fund Count*	Avg LT Earnings	Avg Earnings Growth (TTM)	Avg Earnings Growth (NTM)	Avg Sales Growth (TTM)	Avg Sales Growth (NTM)	Avg Cash Flow Growth (TTM)	Avg Book Growth (TTM)	Avg Dividend Growth (TTM)
39	5.4%	-13.9%	15.0%	-0.1%	3.1%	3.4%	7.5%	2.5%

Category Breakdown: Growth Rating



Top 10 Funds by Growth Score

Ticker	Name	AUM	Growth Rating (0-5)
URA	Global X Uranium ETF	\$2,715.26M	5.00
URNM	Sprott Uranium Miners ETF	\$1,688.96M	5.00
HDRO	Defiance Next Gen H2 ETF	\$20.82M	4.24
HYDR	Global X Hydrogen ETF	\$35.93M	4.24
BATT	Amplify Lithium & Battery Technology ETF	\$90.84M	3.43
SETM	Sprott Energy Transition Materials ETF	\$11.24M	3.25
WBAT	WisdomTree Battery Value Chain and Innovation Fund	\$4.15M	3.20
LIT	Global X Lithium & Battery Tech ETF	\$1,675.75M	3.07
REMX	VanEck Rare Earth/Strategic Metals ETF	\$343.64M	2.89
NLR	VanEck Uranium+Nuclear Energy ETF	\$160.01M	2.68

*Fund count for composition and fundamentals excludes funds with no recent holdings date (ie: ETNs)

Copyright ©2023 ETF Action, Inc. All Rights Reserved. Information or data shown or used in this material was received from sources believed to be reliable, but accuracy is not guaranteed. Simulated performance results have inherent limitations. The results for model portfolio and blended model portfolio illustration(s) are based on actual returns of the investment strategies and securities in the portfolio and are provided for illustrative purposes only. Model portfolio data and performance is based upon the aggregation of the underlying investments according to the given allocation and calculated using FactSet's data with ETF Action's software and methodologies. The services are not intended and should not be construed as financial or investment advice, a recommendation or promotion. Neither ETF Action nor its licensors shall be responsible for investment decisions, damages, or other losses resulting from use of the services. Past performance does not guarantee future performance. Any information contained in the services should not be acted upon without obtaining specific legal, tax, and investment advice from a licensed professional. **For Financial Professional Use Only.**

Appendix: Category Funds 1-50

Ticker	Name	Inception	AUM	1 Month	3 Month	YTD	1 Year	3 Year*	5 Year*
AQWA	Global X Clean Water ETF	4/8/2021	\$9M	5.40%	10.26%	2.72%	17.93%		
BATT	Amplify Lithium & Battery Technology ETF	6/6/2018	\$91M	2.54%	-6.25%	-11.87%	-25.19%	-14.53%	-4.34%
CGW	Invesco S&P Global Water Index ETF	5/14/2007	\$955M	3.18%	7.11%	0.29%	10.80%	5.68%	10.34%
CRIT	Optica Rare Earths & Critical Materials ETF	3/28/2022	\$2M	-4.27%	-1.08%	-11.64%	-16.61%		
CUT	Invesco MSCI Global Timber ETF	11/9/2007	\$54M	1.73%	3.78%	-1.02%	6.65%	-0.77%	5.19%
DMAT	Global X Disruptive Materials ETF	1/24/2022	\$6M	1.68%	-1.60%	-9.50%	-29.96%		
EBLU	Ecofin Global Water ESG Fund	2/15/2017	\$52M	4.54%	10.08%	2.46%	16.32%	5.60%	10.97%
EV	Mast Global Battery Recycling & Production ETF	12/21/2023	\$6M	-0.17%		-10.71%			
FIW	First Trust Water ETF	5/8/2007	\$1,567M	4.84%	12.60%	3.31%	18.50%	9.62%	14.63%
FTAG	First Trust Indxx Global Agriculture ETF	3/11/2010	\$9M	-0.23%	0.42%	-5.18%	-15.32%	-3.89%	2.61%
FTRI	First Trust Indxx Global Natural Resources Income ETF	3/11/2010	\$190M	-0.88%	-0.40%	-4.69%	-2.39%	4.98%	6.79%
FTWO	Strive FAANG 2.0 ETF	8/31/2023	\$5M	2.66%	5.45%	0.59%			
GMET	VanEck Green Metals ETF	11/9/2021	\$24M	-2.32%	-2.65%	-11.09%	-24.69%		
GNR	SPDR S&P Global Natural Resources ETF	9/13/2010	\$3,378M	-1.02%	-2.09%	-5.63%	-3.70%	6.77%	6.98%
GUNR	FlexShares Morningstar Global Upstream Natural Resources Index Fund	9/16/2011	\$6,225M	-0.93%	-2.89%	-6.01%	-6.55%	6.78%	7.30%
HAP	VanEck Natural Resources ETF	8/29/2008	\$108M	-0.27%	1.13%	-3.16%	-0.92%	6.12%	8.88%
HDRO	Defiance Next Gen H2 ETF	3/9/2021	\$21M	-7.73%	-15.97%	-18.60%	-49.32%		
HJEN	Direxion Hydrogen ETF	3/25/2021	\$25M	-4.66%	-8.55%	-12.69%	-28.64%		
HYDR	Global X Hydrogen ETF	7/12/2021	\$36M	-8.83%	-16.36%	-20.84%	-54.87%		
IGE	iShares North American Natural Resources ETF	10/22/2001	\$509M	1.41%	2.15%	0.44%	6.60%	18.87%	9.69%
ILIT	iShares Lithium Miners and Producers ETF	6/23/2023	\$3M	7.57%	-6.21%	-15.19%			
ION	ProShares S&P Global Core Battery Metals ETF	11/29/2022	\$2M	1.18%	1.20%	-8.98%	-22.18%		
IWTR	iShares MSCI Water Management Multisector ETF	9/20/2022	\$6M	2.98%	11.56%	2.91%	13.90%		
LIT	Global X Lithium & Battery Tech ETF	7/22/2010	\$1,676M	6.30%	-3.32%	-9.58%	-27.03%	-8.13%	10.04%
LITP	Sprott Lithium Miners ETF	2/1/2023	\$6M	7.02%	-5.38%	-16.52%	-38.74%		
MGNR	American Beacon GLG Natural Resources ETF	2/6/2024	\$28M						
MOO	VanEck Agribusiness ETF	8/31/2007	\$820M	0.60%	1.83%	-4.73%	-15.63%	-3.01%	5.03%
NANR	SPDR S&P North American Natural Resources ETF	12/15/2015	\$479M	0.45%	-1.98%	-4.49%	-5.21%	12.76%	11.62%
NDIV	Amplify Natural Resources Dividend Income ETF	8/24/2022	\$11M	0.85%	1.78%	-1.19%	13.85%		
NLR	VanEck Uranium+Nuclear Energy ETF	8/13/2007	\$160M	-3.06%	5.25%	1.90%	38.10%	18.63%	10.00%
NUKZ	Range Nuclear Renaissance Index ETF	1/24/2024	\$1M	7.66%					
PHO	Invesco Water Resources ETF	12/6/2005	\$2,038M	6.36%	14.39%	5.01%	21.37%	10.37%	14.32%
PIO	Invesco Global Water ETF	6/13/2007	\$287M	5.96%	13.38%	3.95%	20.49%	7.14%	10.50%
REMX	VanEck Rare Earth/Strategic Metals ETF	10/27/2010	\$344M	4.33%	-8.07%	-14.64%	-38.09%	-12.18%	3.85%
SETM	Sprott Energy Transition Materials ETF	2/1/2023	\$11M	-1.08%	0.88%	-7.95%	-7.91%		
TINT	ProShares Smart Materials ETF	10/26/2021	\$2M	-0.68%	4.46%	-4.97%	-0.18%		
URA	Global X Uranium ETF	11/4/2010	\$2,715M	-8.56%	4.60%	-0.83%	39.23%	21.11%	21.15%
URNJ	Sprott Junior Uranium Miners ETF	2/1/2023	\$317M	-10.56%	7.25%	3.09%	45.13%		
URNM	Sprott Uranium Miners ETF	12/3/2019	\$1,689M	-9.99%	6.16%	-0.17%	48.76%	25.72%	
VEGI	iShares MSCI Agriculture Producers ETF	1/31/2012	\$130M	-1.01%	0.07%	-5.37%	-13.97%	-0.32%	7.01%
WBAT	WisdomTree Battery Value Chain and Innovation Fund	2/17/2022	\$4M	2.57%	-2.81%	-7.65%	-18.23%		
WOOD	iShares Global Timber & Forestry ETF	6/24/2008	\$190M	1.89%	2.36%	-2.52%	9.61%	0.08%	6.25%

*Annualized performance. Returns based on market price.

Copyright ©2023 ETF Action, Inc. All Rights Reserved. Information or data shown or used in this material was received from sources believed to be reliable, but accuracy is not guaranteed. Simulated performance results have inherent limitations. The results for model portfolio and blended model portfolio illustration(s) are based on actual returns of the investment strategies and securities in the portfolio and are provided for illustrative purposes only. Model portfolio data and performance is based upon the aggregation of the underlying investments according to the given allocation and calculated using FactSet's data with ETF Action's software and methodologies. The services are not intended and should not be construed as financial or investment advice, a recommendation or promotion. Neither ETF Action nor its licensors shall be responsible for investment decisions, damages, or other losses resulting from use of the services. Past performance does not guarantee future performance. Any information contained in the services should not be acted upon without obtaining specific legal, tax, and investment advice from a licensed professional. **For Financial Professional Use Only.**

Appendix: Category Funds 51-100

*Annualized performance. Returns based on market price.

Copyright ©2023 ETF Action, Inc. All Rights Reserved. Information or data shown or used in this material was received from sources believed to be reliable, but accuracy is not guaranteed. Simulated performance results have inherent limitations. The results for model portfolio and blended model portfolio illustration(s) are based on actual returns of the investment strategies and securities in the portfolio and are provided for illustrative purposes only. Model portfolio data and performance is based upon the aggregation of the underlying investments according to the given allocation and calculated using FactSet's data with ETF Action's software and methodologies. The services are not intended and should not be construed as financial or investment advice, a recommendation or promotion. Neither ETF Action nor its licensors shall be responsible for investment decisions, damages, or other losses *resulting from use of the services*. *Past performance* does not guarantee future performance. Any information contained in the services should not be acted upon without obtaining specific legal, tax, and investment advice from a licensed professional. **For Financial Professional Use Only.**

Important Disclosure Information:

All charts shown for illustrative purposes only. Information or data shown or used in this material was received from sources believed to be reliable, but accuracy is not guaranteed.

This report does not provide recipients with information or advice that is sufficient on which to base an investment decision. This report does not take into account the specific investment objectives, financial situation or need of any particular client and may not be suitable for all types of investors. Recipients should consider the contents of this report as a single factor in making an investment decision. Additional fundamental and other analyses would be required to make an investment decision about any individual security identified in this report.

ETF Action's model portfolio tools and any reports generated by these tools may illustrate or compare the hypothetical historical performance of a current and/or proposed model portfolio, blended model portfolio or both. While the specific securities/investments held in the model portfolios have actual performance, the combination of these investments in a model portfolio based on the model sponsor and/or your input is new and, therefore, that combination may not have an actual performance record.

The historical returns presented include all items of dividends and interest net of fees unless otherwise stated. Model portfolio and blended model portfolio analysis utilizes position data provided by the model sponsor and/or the user back to the initial asset allocation date provided. There is no guarantee that these hypothetical returns could or would have been achieved had this asset allocation or model portfolio been used during the years presented. Results shown are provided for illustrative purposes only. Past performance is not indicative of future results.

Performance data are based on actual returns of the investment strategies and securities in the portfolio and are provided for illustrative purposes only. Data and performance may be limited due to lack of published performance data either by the issuer or investment manager, or the availability of such data sources to FactSet. Aggregated data and average performance figures are calculated as simple averages of all funds that existed at that point in time for a specific category. All funds currently classified within a category will contribute to average historical performance figures such that a survivorship bias may be present for average category performance figures.

Past performance is not an indicator of future performance. The model portfolio and blended model portfolio returns presented are calculated based on historical investment position data provided by the model sponsor and/or user. The returns do not reflect the actual trading of any account or group of accounts and are thereby hypothetical in nature. Model position changes are implemented using closing prices on position date provided unless otherwise stated and the returns reflect the reinvestment of dividends and interest. The impact of fund fees held in the model portfolios is reflected in the returns for all periods presented. Model portfolio returns shown are net of fees provided by model sponsor and/or user and are prominently displayed in each model portfolio.

ASSET CLASS DEFINITIONS & RISK DISCLOSURES:

US Equities include stocks listed in the United States, including small-cap and mid-cap equities, Master Limited Partnerships (MLPs), Real Estate Investment Trusts (REITs), and alternative equity securities, including covered call ETFs and hedged ETFs or ETFs that make use of derivatives. Stocks represent partial ownership of a corporation. If the corporation does well, its value can increase, and investors can share in the appreciation. However, if it goes bankrupt, or performs poorly, investors can lose their entire initial investment (i.e., the stock price can go to zero). MLP investing includes risks such as equity- and commodity-like volatility. Also, distribution payouts sometimes include the return of principal and, in these instances, references to these payouts as "dividends" or "yields" may be inaccurate and may overstate the profitability/success of the MLP. There are potentially complex and adverse tax consequences associated with investing in MLPs. There are special risks associated with an investment in real estate and REITs, including credit risk, interest rate fluctuations and the impact of varied economic conditions. A covered call option involves holding a long position in a particular asset, in this case US common equities, and writing a call option on that same asset with the goal of realizing additional income from the option premium. Certain ETFs use a covered call strategy. By selling covered call options, the fund limits its opportunity to profit from an increase in the price of the underlying index above the exercise price but continues to bear the risk of a decline in the index. Using a hedge or a hedged product does not insulate the portfolio against losses.

Global equities are equities that span across both developed countries and emerging markets. Investments in international and emerging markets securities include exposure to risks such as currency fluctuations, foreign taxes and regulations, and the potential for illiquid markets and political instability.

International Equities are equities that span across both developed countries and emerging markets, excluding U.S. equities. Investments in international and emerging markets securities include exposure to risks such as currency fluctuations, foreign taxes and regulations, and the potential for illiquid markets and political instability.

Developed international equities are large cap and mid cap equities in developed countries excluding the U.S. and Canada. International investments involve greater risks than U.S. investments, and can decline significantly in response to adverse issuer, political, regulatory, market, and economic risks.

Emerging market equities are large cap and mid cap equities in emerging market countries. Emerging market countries are countries with economies that are considered rapidly expanding and engaging aggressively in global markets. In addition to the risks associated with all international investing, inflation and rapid fluctuations in inflation rates have had, and may continue to have, negative effects on the economies and securities markets of certain emerging market countries.

Investment grade fixed income securities include broad fixed income, corporate securities, municipal bonds, treasuries, and mortgage backed securities (MBS). Investment grade securities are believed to be at less risk of default and rated higher by the credit rating agencies. In general, the bond market is volatile, and fixed income securities carry interest rate risk. (As interest rates rise, bond prices usually fall, and vice versa). This effect is usually more pronounced for longer-term securities.

Fixed income securities also carry inflation risk, liquidity risk, call risk and credit and default risks for both issuers and counterparties. The municipal market can be affected by adverse tax, legislative, or political changes, and by the financial condition of the issuers of municipal securities. MBS are subject to prepayment and extension risk; as such, they react differently to changes in interest rates than other bonds. Small movements in interest rates may quickly and significantly reduce the value of certain MBS.

Alternative fixed income asset class includes high yield, preferreds, bank loans, currency funds, developed non-US debt, emerging market debt, TIPS, and floaters. Lower-quality fixed income securities found in this category involve greater risk of default or price changes due to potential changes in the credit quality of the issuer. Any fixed-income security sold or redeemed prior to maturity may be subject to loss. Additionally, non-US/emerging market debt assumes the same risks as international investing.

Cash & Equivalents include direct cash positions and underlying cash positions within fund positions within a model. This also includes money market funds that may be held by the model or underlying positions.

Unassigned designations are used for positions that include options, commodities contracts, or other derivatives, and may not have composition data available.

Commodities include securities that tract bulk goods and raw materials, such as grains, metals, livestock, oil, cotton, coffee, sugar, and cocoa, that are used to produce consumer products. Buying commodities allows for a source of diversification for those sophisticated persons who wish to add this asset class to their portfolios and who are prepared to assume the risks inherent in the commodities market. Any commodity purchase represents a transaction in a non-income-producing asset and is highly speculative. Therefore, commodities should not represent a significant portion of an individual's portfolio.

Alternatives are securities that are typically less or inversely correlated with Equities and Fixed Income such as Index Volatility ETFs. Alternative investments are often non income producing and highly speculative. Therefore, alternative investments should not represent a significant portion of an individual's portfolio.

Dividends are not guaranteed and are subject to change or elimination.

ETFs are subject to substantially the same risks as those associated with the direct ownership of the underlying securities owned by the ETF. Additionally, the value of the investment will fluctuate in response to the performance of the underlying index or securities. ETFs typically charge therefore, investments in ETFs will result in the layering of expenses.

DEFINITIONS:

Acquired Fund Fees is the weighted average of the expense ratios of all model holdings.

Distribution yield refers to the percentage of income a portfolio has distributed to investors over the last 12 months. At the model level, this is calculated as a weighted average of TTM yield for all model holdings. This is based on fund and/or stock distributions, and is not a look-through calculation.

Geometric return is a measure of the compound rate of growth in a portfolio. This method eliminates the distorting effects created by inflows of new money. This is also called the 'geometric mean return,' as the reinvestment is captured by using the geometric total and mean, rather than the arithmetic total and mean. It is assumed that all cash distributions are reinvested in the portfolio and the exact same periods are used for comparisons. The difference between the two return measures is caused by volatility. The more volatile the asset class, the bigger the difference between its geometric and average annual returns. The geometric mean return is typically lower than the arithmetic mean return.

Pure gross returns are calculated before the deduction of advisory fees, trading expenses and other fees. Net of fees performance reflects the deduction of the advisory fees charged to the client, trading expenses, and other costs associated with investments made by the client. Returns do not include the reinvestment of dividends.

Standard deviation is a measure of the dispersion of a set of data from its mean. The more spread apart the data is, the higher the deviation. Calculated using monthly returns.

Alpha refers to the performance differential between a specific investment and that of the investment's beta multiplied by its benchmark. It isolates the portion of total return not accredited to movement in the broader market. Calculated using monthly returns.

Beta is a measure of the volatility—or systematic risk—of a security or portfolio compared to its relative benchmark. Securities with betas higher than 1.0 can be interpreted as more volatile relative to movements in the market benchmark while securities with a beta less than 1.0 can be interpreted as less volatile relative to movements in the market benchmark. Calculated using monthly returns.

The Sharpe ratio is the average return earned in excess of the risk-free rate per unit of volatility or total risk. Volatility is a measure of the price fluctuations of an asset or portfolio. Calculated using monthly returns.

The correlation coefficient is a statistical measure of the strength of the relationship between the relative movements of two variables. The values range between -1.0 and 1.0. A calculated number greater than 1.0 or less than -1.0 means that there was an error in the correlation measurement. A correlation of -1.0 shows a perfect negative correlation, while a correlation of 1.0 shows a perfect positive correlation. A correlation of 0.0 shows no linear relationship between the movement of the two variables. Calculated using monthly returns.

R-squared (R²) is a statistical measure that represents the proportion of the variance for a dependent variable that's explained by an independent variable or variables in a regression model. Calculated using monthly returns.

Tracking error is the divergence between the price behavior of a position or a portfolio and the price behavior of a benchmark. This is often in the context of a hedge fund, mutual fund, or exchange-traded fund (ETF) that did not work as effectively as intended, creating an unexpected profit or loss. Tracking error is reported as a standard deviation percentage difference, which reports the difference between the return an investor receives and that of the benchmark they were attempting to imitate. Calculated using monthly returns.

The upside capture ratio measures an investment manager's relative performance during bull markets. The ratio is calculated by comparing the manager's returns in up-markets with that of a benchmark. Calculated using monthly returns.

The down-market capture ratio is a statistical measure of an investment manager's overall performance in down-markets. It is used to evaluate how well an investment manager performed relative to an index during periods when that index has dropped. The ratio is calculated by dividing the manager's returns by the returns of the index during the down-market and multiplying that factor by 100. Calculated using monthly returns.

A drawdown refers to how much an investment or trading account is down from the peak before it recovers back to the peak. Drawdowns are typically quoted as a percentage, but dollar terms may also be used if applicable for a specific trader. Drawdowns are a measure of downside volatility. Calculated using monthly returns.

Market capitalization is the sum of the total value of a company's outstanding shares multiplied by the price of one share. With a weighted average market capitalization, components that have a higher market cap have more influence because they constitute a higher percentage in the index; those with smaller caps have less influence.

The Price/Earnings Ratio or P/E Ratio is a valuation metric that assesses how many dollars investors are willing to pay for one dollar of a company's earnings. It's calculated by dividing a stock's price by the company's trailing 12-month earnings per share from continuous operations. Negative P/E ratios are excluded. Calculated using weighted harmonic average.

The forward (or leading) P/E uses future earnings guidance rather than trailing figures. Negative P/E ratios are excluded. Calculated using weighted harmonic average.

The Price/Sale (P/S) ratio is a stock's current price divided by the company's trailing 12-month sales per share. This represents the weighted average of the price/sales ratios of the stocks in a fund's portfolio. Price/sales represents the amount an investor is willing to pay for a dollar generated from a particular company's operations. Calculated using weighted harmonic average.

The forward (or leading) P/S uses future sales estimates rather than trailing figures. Calculated using weighted harmonic average.

The price/book (P/B) ratio of a fund is the weighted average of the price/book ratios of all the stocks in a fund's portfolio. Book value is the total assets of a company, less total liabilities (sometimes referred to as carrying value). A company's book value is calculated by dividing the market price of its outstanding stock by the company's book value, and then adjusting for the number of shares outstanding (Stocks with negative book values are excluded from this calculation.). Calculated using weighted harmonic average.

The price-to-cash flow (P/CF) ratio is a stock valuation indicator or multiple that measures the value of a stock's price relative to its operating cash flow per share over the trailing twelve months. The ratio uses operating cash flow (OCF), which adds back non-cash expenses such as depreciation and amortization to net income. Calculated using weighted harmonic average.

Price to free cash flow is an equity valuation metric used to compare a company's per-share market price to its per-share amount of free cash flow (FCF) over the trailing twelve months. This metric is very similar to the valuation metric of price to cash flow but is considered a more exact measure, owing to the fact that it uses free cash flow, which subtracts capital expenditures (CAPEX) from a company's total operating cash flow, thereby reflecting the actual cash flow available to fund non-asset-related growth. Negative P/E ratios are excluded. Calculated using weighted harmonic average.

The price/earnings to growth ratio (PEG ratio) is a stock's price-to-earnings (P/E) ratio divided by the growth rate of its earnings for a specified time period (NTM - next twelve months). The PEG ratio is used to determine a stock's value while also factoring in the company's expected earnings growth, and it is thought to provide a more complete picture than the more standard P/E ratio. Calculated using weighted harmonic average.

The dividend yield, expressed as a percentage, is a financial ratio (dividend/price) that shows how much a company pays out in dividends each year relative to its stock price. Unless otherwise stated, dividend yield takes the distributions over the trailing 12 months divided by the price on the as of date. Note that the dividend yield is a look through of all funds and securities to underlying holdings, and may not reflect what the fund or model actually distributes. Calculated using weighted harmonic average.

Gross margin is a ratio that equates to net sales minus the cost of goods sold divided by net sales. The gross margin shows the ratio of profit made before deducting selling, general, and administrative (SG&A) costs. Calculated using weighted average.

The net margin is a measure of profitability. It is equal to annual net income divided by revenues over the trailing 12 months. The resulting figure is then multiplied by 100. Calculated using weighted average.

Return on equity (ROE) is the percentage a company earns on its total equity in a given year. ROE shows how much profit a company generates on the money shareholders have invested in the firm. Calculated using weighted average.

Return on assets (ROA) is the percentage a company earns on its assets in a given year (Year 1, 2, etc.). The calculation is net income divided by end-of-year total assets. The resulting figure is then multiplied by 100. For a mutual fund, ROA represents a weighted median figure such that approximately 50% of the domestic stocks in the portfolio will have a greater ROA and roughly 50% of these domestic stocks will have a lower ROA than the weighted median. Calculated using weighted average.

Return on invested capital (ROIC) is the percentage of money a company earns that is above the average cost it pays for its debt and equity capital. Calculated using weighted average.

The interest coverage ratio is a debt and profitability ratio used to determine how easily a company can pay interest on its outstanding debt. The interest coverage ratio is calculated by dividing a company's earnings before interest and taxes (EBIT) by its interest expense during a given period. Calculated using weighted average.

The debt-to-equity (D/E) ratio is used to evaluate a company's financial leverage and is calculated by dividing a company's total liabilities by its shareholder equity. Calculated using weighted average.

The payout ratio, also known as the dividend payout ratio, shows the percentage of a company's earnings paid out as dividends to shareholders over the trailing twelve months. Calculated using weighted average.

Per share growth metrics calculate the growth metrics over the trailing twelve months (TTM) or estimated growth metrics over the next twelve months (NTM) for Earnings, Sales, Cash Flow, Free Cash Flow, Book Value, and Dividends. Calculated using weighted median.

Long-Term earnings (LT Earnings) calculates the growth in earnings per share over longer time horizons (5 years). Calculated using weighted median.

The coupon rate is calculated by weighting each bond's coupon by its relative size in the portfolio. It indicates whether the underlying fund owns more high- or low-coupon bonds. There can be advantages to holding higher coupon bonds, but many funds buy them simply to tempt investors with a high payout. This can be damaging to investors for two reasons. The first is that higher-coupon bonds often carry greater risk than lower-coupon issues. The second is that when these bonds don't carry extra risk, they are old issues that the fund has paid up for and if the offering doesn't amortize the extra yield, investors are likely to find that their principal erodes over time. Calculated using weighted average.

Effective duration is a measure of a fund's interest-rate sensitivity; the longer a fund's duration, the more sensitive the fund is to shifts in interest rates. Duration is determined by a formula that includes coupon rates and bond maturities. Small coupons tend to increase duration, while shorter maturities and higher coupons shorten duration. The relationship between funds with different durations is straightforward: A fund with a duration of 10 years is twice as volatile as a fund with a five-year duration. Calculated using weighted average.

Modified Duration expresses the measurable change in the value of a security in response to a change in interest rates. Calculated using weighted average.

Average effective maturity is a weighted average of all the maturities of the bonds in a portfolio, computed by weighting each bond's effective maturity by the market value of the security. Average effective maturity takes into consideration all mortgage prepayments, puts, and adjustable coupons. Longer-maturity funds are generally considered more interest-rate sensitive than their shorter counterparts. We list Average Effective Maturity for Taxable Fixed-Income and Hybrid funds and Average Nominal Maturity for Municipal Bond Funds. Since this is collected by survey, it is important to bear in mind that different fund companies may use different interest-rate assumptions in determining call likelihood and timing. Generally speaking, the longer the maturity, the greater the interest rate risk. When duration is unavailable, this is used in the calculation of the fixed income style box. Calculated using weighted average.

Yield to Maturity: is the holding weighted average yield of all applicable holdings within a portfolio. Yield is a measure of the expected rate of return. Calculation of yield to maturity of a security ignores the impact of options such as a call or put feature. Calculated using weighted average.

Yield to worst is calculated on all possible call dates. It is assumed that prepayment occurs if the bond has call or put provisions and the issuer can offer a lower coupon rate based on current market rates. If market rates are higher than the current yield of a bond, the yield to worst calculation will assume no prepayments are made, and yield to worst will equal the yield to maturity.

The assumption is made that prevailing rates are static when making the calculation. The yield to worst will be the lowest of yield to maturity or yield to call (if the bond has prepayment provisions); yield to worst may be the same as yield to maturity but never higher. Calculated using weighted average.

Convexity demonstrates how the duration of a bond changes as the interest rate changes. If a bond's duration increases as yields increase, the bond is said to have negative convexity. If a bond's duration rises and yields fall, the bond is said to have positive convexity. Calculated using weighted average.

Key rate duration measures how the value of a debt security or a debt instrument portfolio, generally bonds, changes at a specific maturity point along the entirety of the yield curve. When keeping other maturities constant, the key rate duration is used to measure the sensitivity in a debt security's price to a 1% change in yield for a specific maturity.

Disclaimer of Warranties

Except for the express warranties set forth in the terms of service, all services, including all ETF Action materials, are provided on an "as is," "where is" basis, and ETF Action and its licensors disclaim all representations or warranties, express or implied as to the services. ETF Action and its licensors specifically disclaim all implied warranties of merchantability, fitness for a particular purpose, title and non-infringement, and all warranties arising from course of dealing, usage or trade practice. Without limiting the foregoing, ETF Action and its licensors make no warranty of any kind that the services or ETF Action materials, or any products or results of the use thereof, will meet customer's or any other person's requirements, operate without interruption, achieve any intended result, be compatible or work with any software, system or other services, or be secure, accurate, complete, timely, free of harmful code or error free. All third-party materials are provided "as is" and any representation or warranty of or concerning any third-party materials is strictly between customer and the third-party owner or distributor of the third-party materials.

Additional Disclaimers

The services are not intended and should not be construed as financial or investment advice, a recommendation or promotion. Neither ETF Action nor its licensors shall be responsible for investment decisions, damages, or other losses *resulting from use of the services*. *Past performance* does not guarantee future performance. Neither ETF Action nor its licensors shall be considered an "expert" under the securities act of 1933. Neither ETF Action nor its licensors warrant that the services comply with the requirements of the NASD or any similar organization or with the securities laws of any jurisdiction. Any information contained in the services should not be acted upon without obtaining specific legal, tax, and investment advice from a licensed professional.

The Global Industry Classification Standard (GICS[®]) was developed by and/or is the exclusive property of MSCI, Inc. and S&P Global Market Intelligence Inc. GICS is a service mark of MSCI and S&P Global Market Intelligence and has been licensed for use by ETF Action.

Distribution prohibited without prior permission. Full terms of service, including terms of use, copyrights, and disclaimers are available at <https://www.etfaction.com/terms>.

Data Reliability and Definitions

ETF Action, LLC believes the information herein to be accurate (at time of publication) and was obtained from reliable sources, but makes no guarantees with respect to its accuracy.

Source Data & ETF Issuer Information FactSet Research Systems

To review other risks and more information about ETF Action, Inc., please visit the website at www.etfaction.com.